

JOINING THE LIBRARY

The library is open to anyone with an interest in German history, British-German relations or comparative historiography.

Readers' tickets, for which a passport photo and recent proof of address are required, are available at reception free of charge.

ACCESSIBILITY

Access to the GHIL from the street is via a few steps. However, a ramp can be provided to enable wheelchair users to enter the building.

Please contact us in advance if assistance is required. A lift connects all floors of the building and there is a wheelchair-accessible toilet. An induction loop is provided in the reception area.



CONTACT US

German Historical Institute London
17 Bloomsbury Square
London WC1A 2NJ
Tel. +44-(0)20 7309 2050

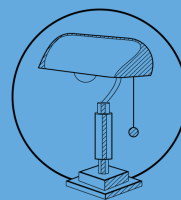


OPENING TIMES

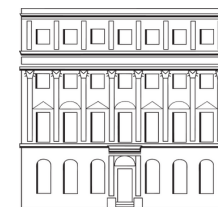
Please check our website for current opening hours and procedures or call +44 (0)20 7309 2050.

Closed weekends, Bank Holidays and between Christmas and the New Year.

Further details are available at <http://www.ghil.ac.uk/library>



German Historical Institute Library



German
Historical
Institute
London

Max Weber
Stiftung

Foundation
German Humanities
Institutes Abroad

GHIL LIBRARY

Specializes in German history and British-German relations from the Middle Ages to the present day. Its holdings concentrate on modern German history (in English as well as in German), with special emphasis on the twentieth century.

Acquisitions of the most important works on German history are as comprehensive as possible. The intention is to cover the whole spectrum of German historiography, providing a reliable basis for research on all aspects of German history. The library is conveniently located in the heart of Bloomsbury, close to the British Museum, Senate House and the LSE.

The Common Room offers space for group discussions and chats over a cup of tea.



FEATURES

Most comprehensive and up-to-date library on German history in the UK.

- Quiet and spacious work areas in a beautiful historical building
- Approximately 90,000 books in German and English
- Subscription to many current periodicals including all important German regional history journals
- Other collection highlights include:
 - Access to Refugee Voices, a major audio-visual archive for the study of the Holocaust and the history of German refugees in Britain
 - Collections of primary sources, e.g. Deutsche Zeitschriften des 18. und 19. Jahrhunderts, Pressearchiv zur Geschichte Deutschlands sowie zur Internationalen Politik 1949-1960, Partei und Staat in der DDR
- Facilities for photocopying and scanning (no charge for scanning to USB or mobile devices)

- Free wifi and internet access for registered users
- Print books and journals are accessible on open shelves but cannot be taken out on loan

Qualified library staff are available to answer enquiries and assist you with your research.

