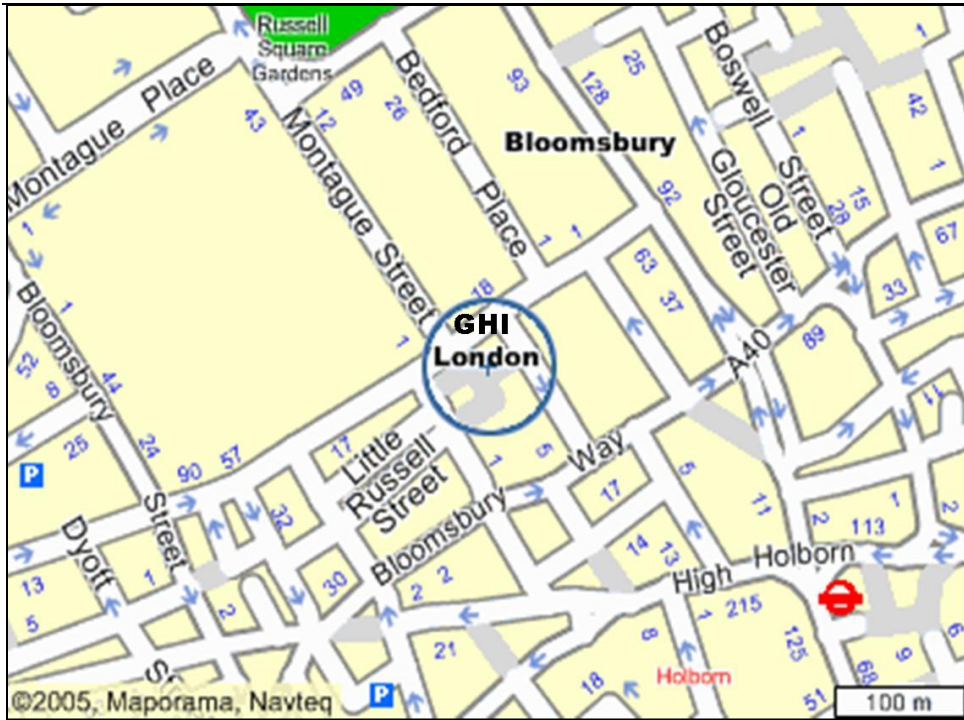


Thursday 12 January 2012

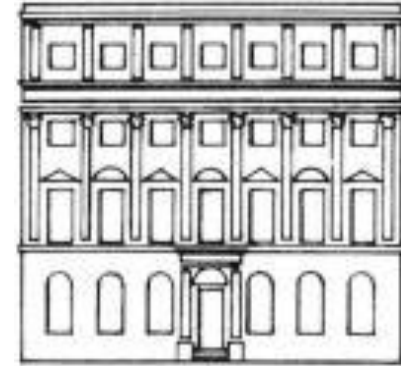
- 10.00-11.15** **Paleography Course**
Tutor: Dorothea McEwan
Warburg Institute, University of London
- 11.15-11.30 Coffee / Tea Break
- 11.30-13.00** **Paleography Course** (continued)
- 13.00-13.50 Lunch
- 13.50-14.00** **Welcome and Introduction by Benedikt Stuchtey**
Section I **Chair: Angela Schattner**
- 14.00 Mads Jensen
Political Order and Authority in the German Reformation
- 14.30 Hanna Weibye
Friedrich Ludwig Jahn and German Nationalism: 1800-1819
- 15.00 Diana Siclovan
Lorenz Stein and the Place of Socialism in the German Political Imagination, ca. 1835-1870
- 15.30-15.45 Break
- Section II** **Chair: Markus Mösslang**
- 15.45 Helen Roche
Personal and Political Appropriations of Sparta in German Elite Education During the 19th and 20th Centuries
- 16.15 Shane Nagle
"Historical Narratives and European Nationalisms, the Cases of Germany and Ireland Compared: W.E.H. Lecky and Heinrich v. Treitschke"
- 16.45 Mahon Murphy
Rum, Solitary and the Lash: Violence Against German Prisoners in the Colonies during World War One
- 17.15-17.30 Coffee / Tea Break
- Section III** **Chair: Silke Strickrodt**
- 17.30 Max Haberich
Arthur Schnitzler's 'Professor Bernhardt': Anti-Semitism on the Stage and in Reality
- 18.00 Astrid Zajdband
German Rabbis in British Exile and their Influence on Judaism in Britain
- 18.30 Waseem Yaqoob
Hannah Arendt: History and Judgment

Friday 13 January 2012

- Section IV** **Chair: Martina Steber**
- 09.30 Rachel Century
Typing for the Third Reich
- 10.00 Thomas Brodie
Catholicism on Germany's Home Front in the Second World War
- 10.30 Victoria Stiles
German Perceptions of the British Empire, 1939-1945
- 11.00-11.15 Coffee / Tea Break
- Section V** **Chair: Kerstin Brückweh**
- 11.15 Gaelle Fisher
From Survival to Belonging: Narratives of Loss, Suffering and New Beginning Among German Speakers from Romania
- 11.45 Christiane Grieb
War Crimes Trial Legacies and Cold War Politics in Post National-Socialist Germany
- 12.15 Arddun Hedydd Arwyn
The Social Memory and Historical Culture of East and West Prussians in the Federal Republic of Germany, 1949 - 2009
- 12.45-13.30 Lunch
- Section VI** **Chair: Michael Schaich**
- 13.30 Kinga Bloch
Television Families in Cold War Europe. A Comparative Study of Polish, East and West German Television Series
- 14.00 David Zell
The Bicentennial of Beethoven's Birth in 1970 and the Significance of Classical Music in the Political System of the GDR
- 14.30-14.45 Coffee / Tea Break
- Section VII** **Chair: Valeska Huber**
- 14.45 Martin Albers
British and German Relations with China, 1969-1982
- 15.15 Zhong Zhong Chen
Between Political Pragmatism and Moscow's Watchful Eye: East German-Chinese Relations in the 1980s
- 15.45 Clare Murray
Beyond Presence / Absence in the Built Environment of Post-Unification Berlin.



Nearest Tube Station to Institute: Holborn (Piccadilly and Central Line)



German Historical Institute London

Postgraduate Student Conference

Thursday 12 – Friday 13 January 2012

Programme

German Historical Institute London
17 Bloomsbury Square, London WC1A 2NJ
Tel. +44 (0)20 7309 2023 Fax +44 (0)20 7309 2073
website: www.ghil.ac.uk email: abellamy@ghil.ac.uk